

*for Capt.  
Kirkpatrick  
- Artillery -  
Master*

~~RESTRICTED~~

HEADQUARTERS  
FIRST UNITED STATES ARMY  
Photo Interpretation Section  
APO 230

GRIDDED OBLIQUE PHOTOGRAPH

SORTIE : Special for Capt. Brown  
REQUEST: (G0/8/22/100)  
DATE : 1 December 1944  
MAPS : GSGS 4444, 1:25,000, Sheet 5604

USE GRID SHEETS FOR PLOTTING

PHOTO  
LETTERS

XA-1  
XB-2  
XC-3

COORDINATES OF  
FLIGHT POINTS

COORDINATES OF POINTS  
ON CENTER LINE

01205 - 94001  
01235 - 93235  
01205 - 92413

09000 - 94130  
09000 - 93263  
09000 - 92230

USE GRID SHEETS FOR PLOTTING

For the Chief of Section:

*Frank A. Elliott*  
FRANK A. ELLIOTT  
Capt., CE,  
Operations Officer.

Typed by - Pvt. Solin  
Proofread by - Pvt. Solin

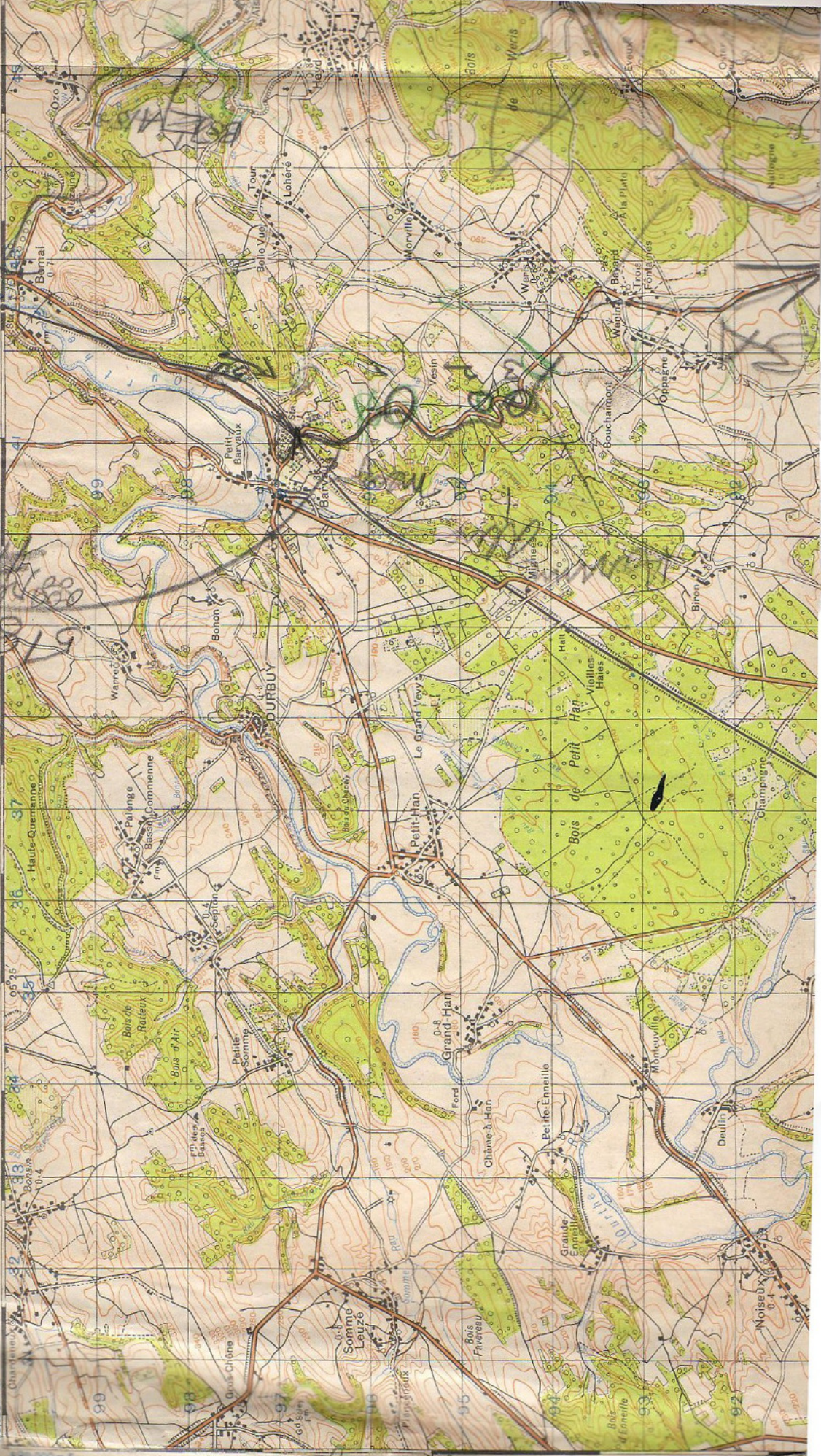
~~RESTRICTED~~

DURBUY

FRANCE AND BELGIUM 1:50,000

10,000 m. N

Chartreuse



44

42

40

39

38

37

36

35

34

33

32

31

30

29

28

27

26

25

24

23

22

21

20

007° 30'

007° 15'

007° 00'

006° 45'

006° 30'

006° 15'

006° 00'

005° 45'

005° 30'

005° 15'

005° 00'

004° 45'

004° 30'

004° 15'

004° 00'

003° 45'

003° 30'

003° 15'

003° 00'

002° 45'

002° 30'

002° 15'

002° 00'

*1st Lt. C. J. ... Capt. ...*

# "Action at Chérain" 20-22 Dec 44

SEE INTERVIEWS WITH  
 C TROOP - 32nd Sgdo.  
 F COMPANY - 32nd Sgdo.  
 Ft COLVIN

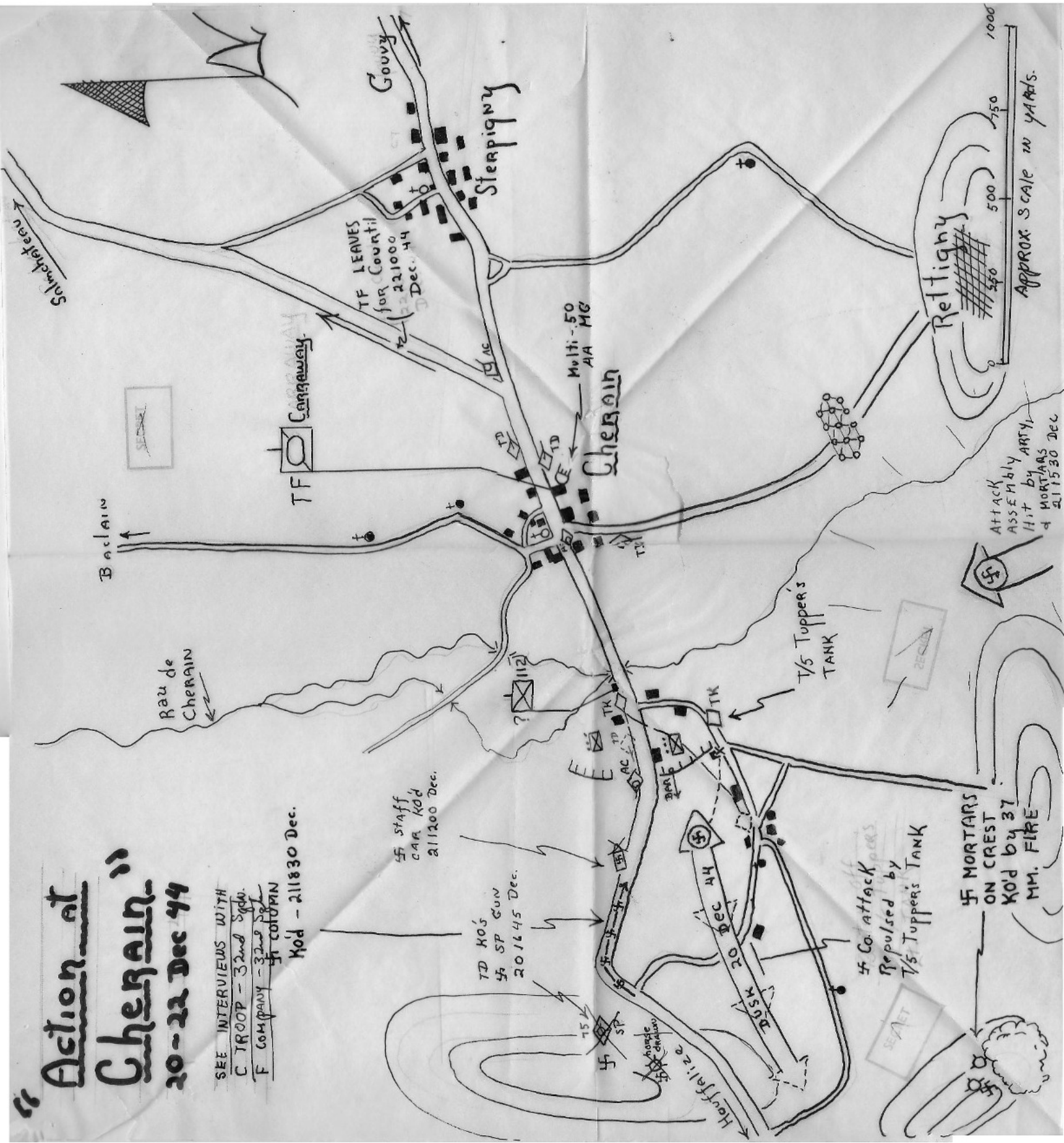
Mod - 211830 Dec.

5 Staff  
 CAR KO'd  
 211200 Dec.

TD KO's  
 5 SP GUN  
 201445 Dec.

5 Co attack  
 Repulsed by  
 7/5 Tupper's TANK

5 MORTARS  
 ON CREST  
 KO'd by 37  
 MM. FIRE



ATTACK ASSEMBLY ARTY.  
 HIT by MORTARS  
 211530 DEC

SECRET

P.C. = P-773919

# "Action at Poteau"

s/Sq Reeves' Tvk.

Lt. West's patrol

pinned down by 4 MG

KO'd Asslt GUN

Enemy Infiltration

Columb attacked here 18 Dec 44

KO'd Asslt gun - 4 Troops in U.S. uniforms

Withdrewal 18/300 Dec. 44

This Road Jammed night 17-18 Dec 44

VIELSALM

St. Vith

SEE - Interviews C Troops 18 + 32nd Sqdns. Maj Mayes - "TF Mayes" General Story - "Action at Poteau"

1070

JTS-2nd Lt. H. Hig. First Army

2993 EASTMAN TOPOGRAPHIC SAFETY

2994 EASTMAN TOPOGRAPHIC SAFETY

(US 30/5222) 25 DEC 44(F/24)M67TRGP 1045A