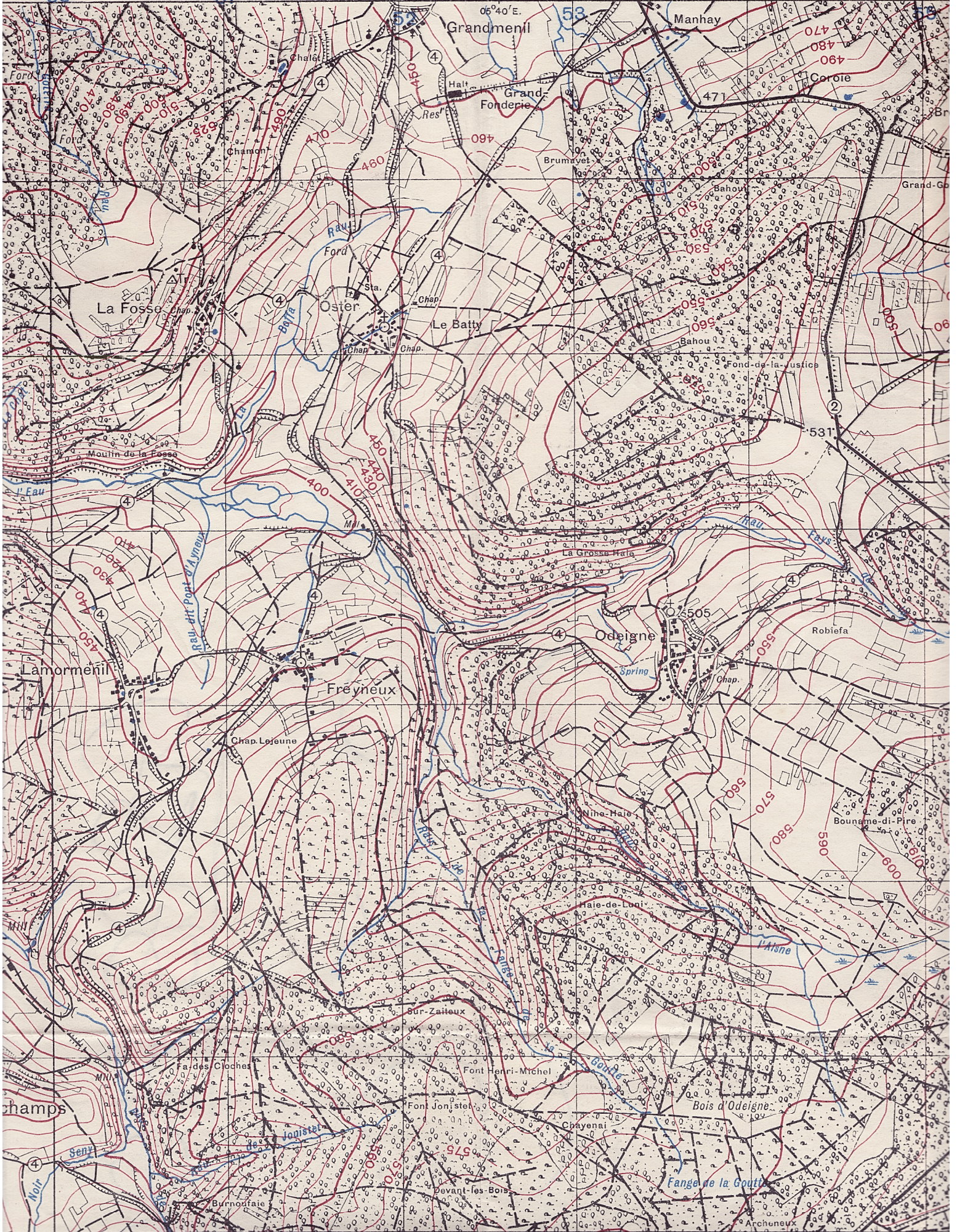


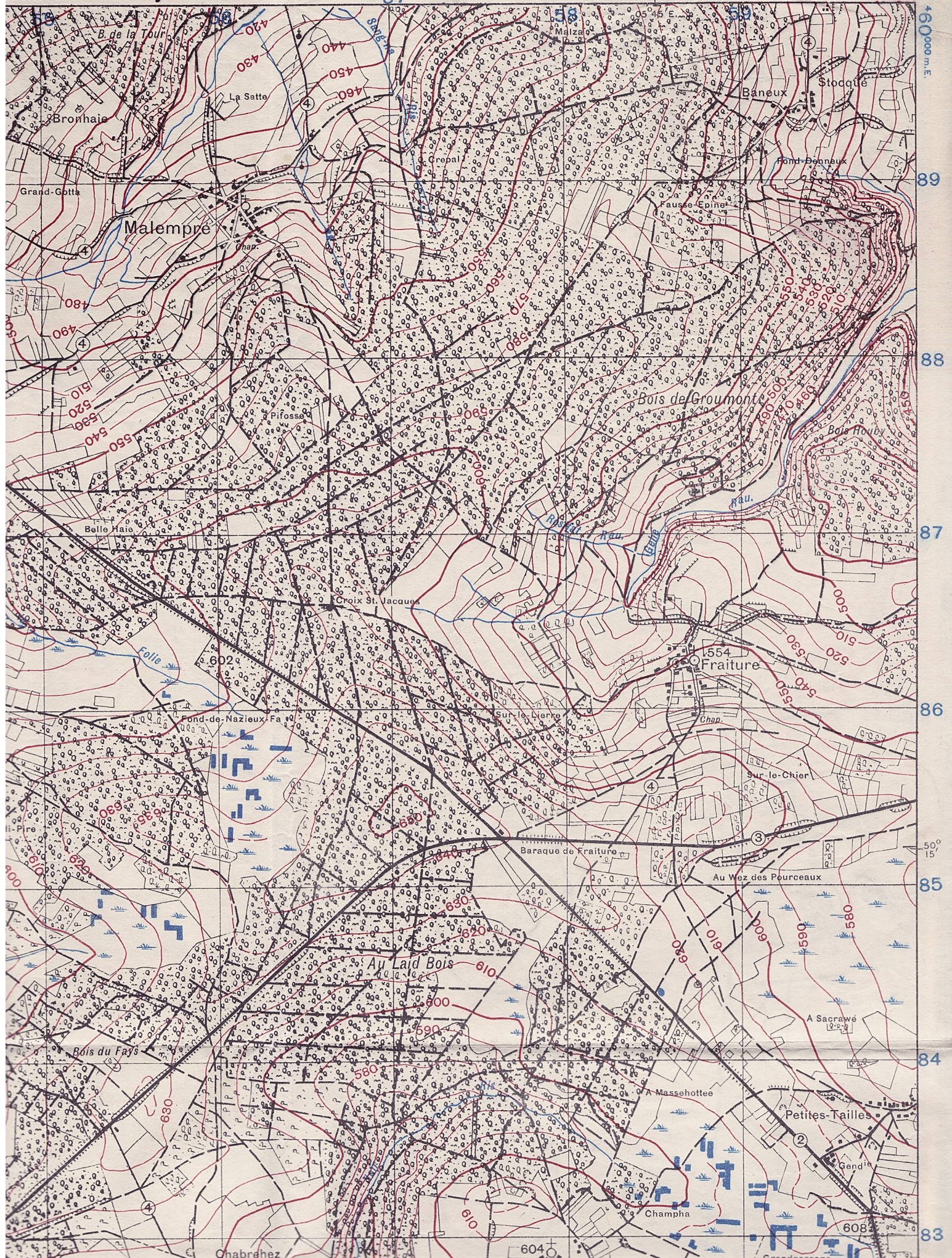
450

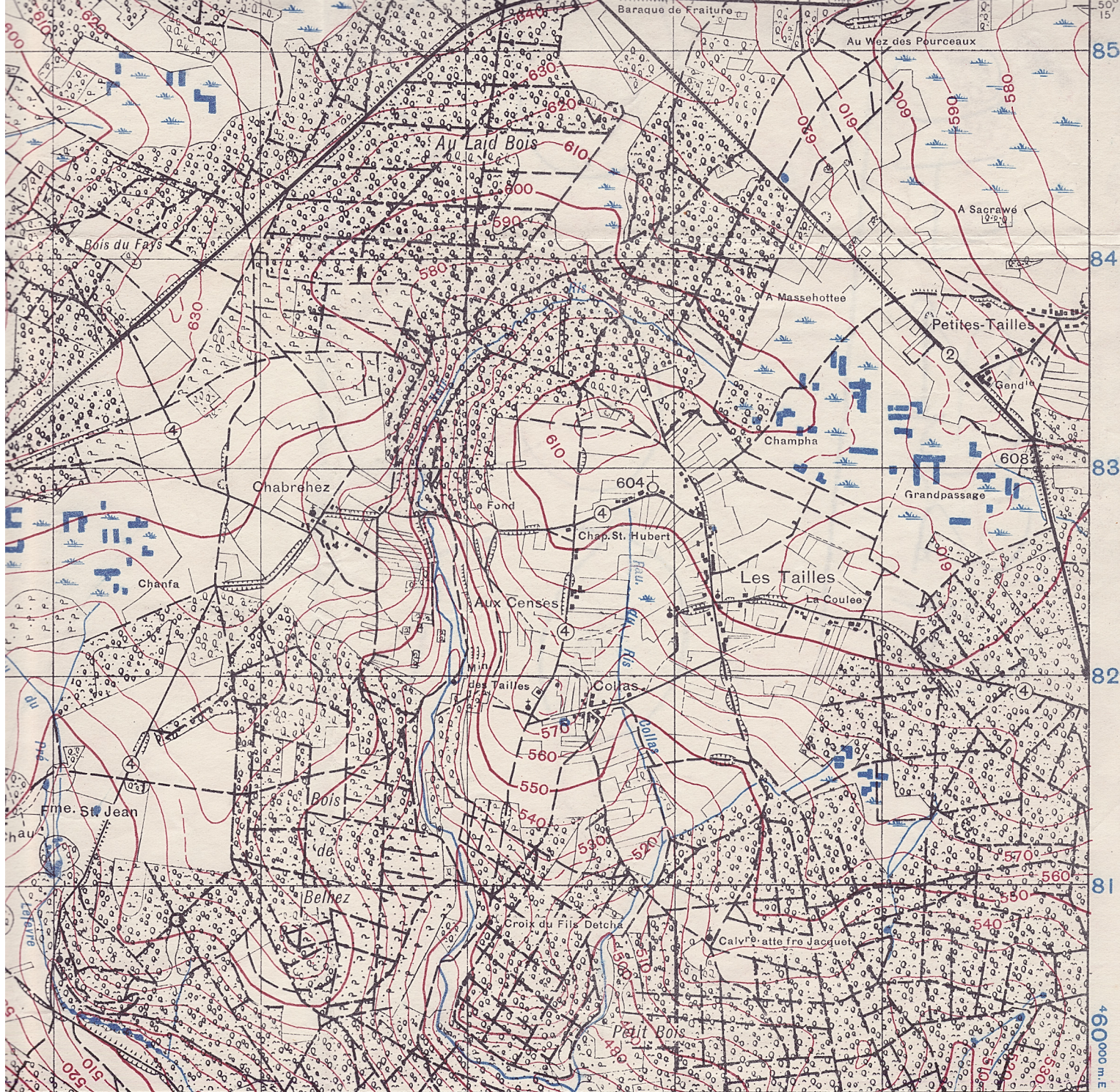
51

54

06°40'E.







55 56 57 58 59 80 000 m.N. 05°45' E.

46000 m.E.

4000 Yards
4000 Metres
Reliability is uncertain.

Convergence is given for centres of W. & E. sheet lines

Magnetic declination for centre of sheet from True North 7°00' W. from Grid North 5°25' W. June 1944. Annual change about 10' E.

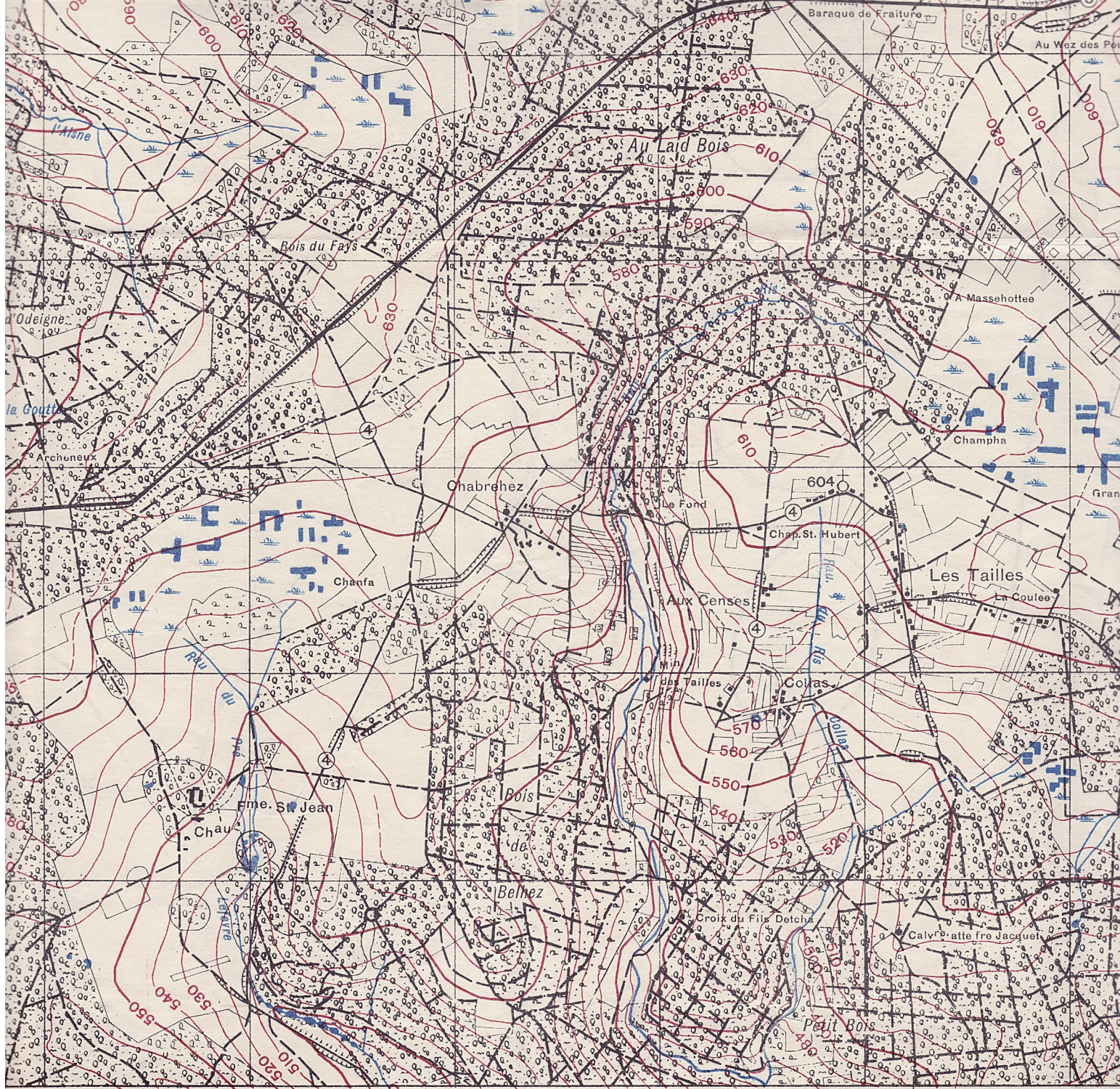
RELIABILITY DIAGRAM

Revised from Air Photos.

Revised and Drawn by O.S. 1944.

The Grid on this sheet is Nord de Guerre. Projection—Lambert (modified) Conical Orthomorphic. Spheroid—Du Plessis (reconstituted). Origin—55 Grades N. 6 Grades E. of Paris. False Co-ords. of Origin—600,000 m.E. 300,000 m.N. Difference in Long. Paris—Greenwich 2°20' 13.95"

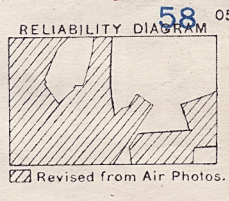
*Belgium
SE Name*



54 to 1 Mile 3000 4000 Yards
 3000 4000 Metres
 on the ground and its reliability is uncertain.
 shown.

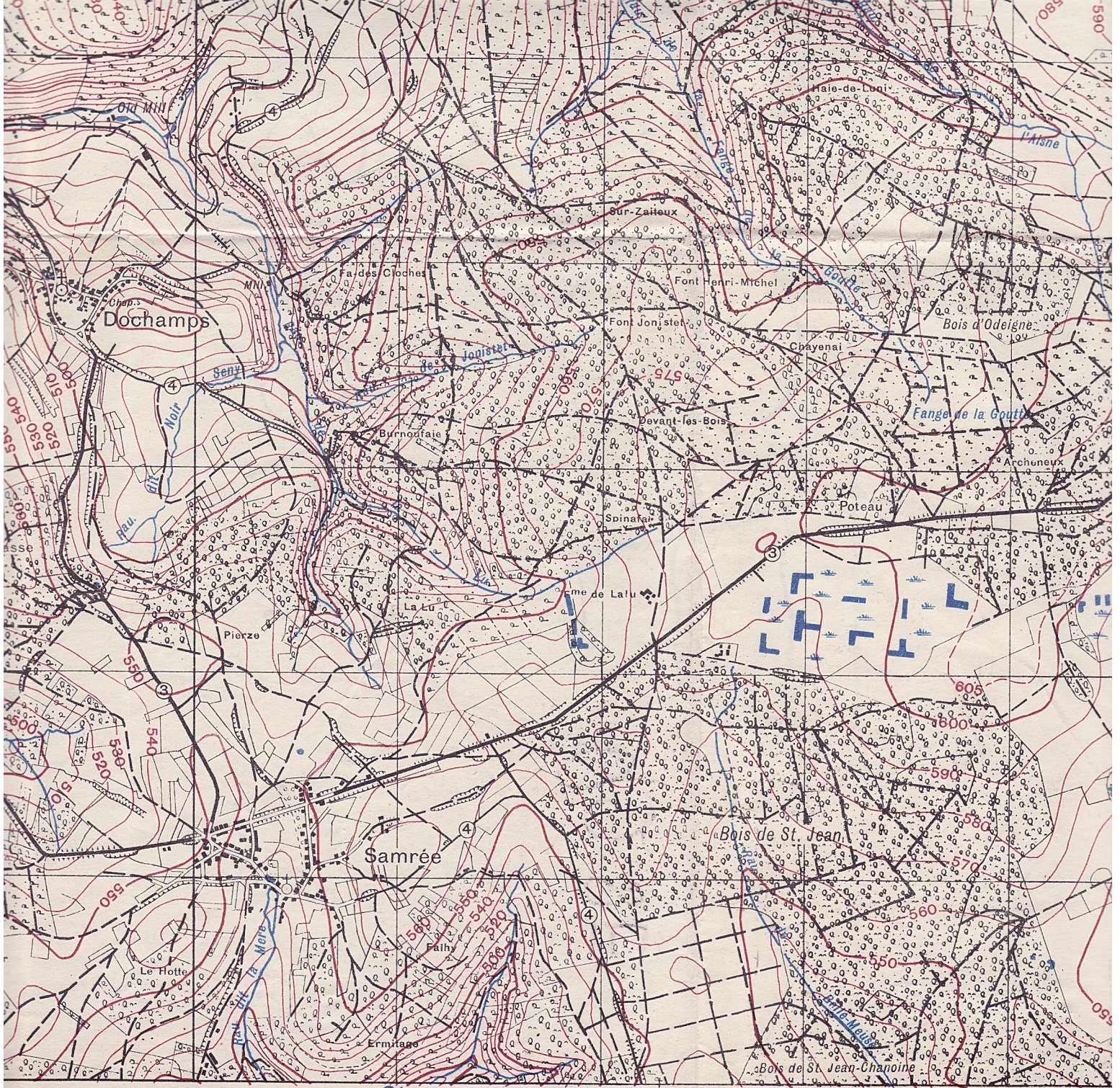
Convergence is given for centres of W. & E. sheet lines

C. - 1° 39' W.	★	Magnetic declination for centre of sheet from True North 7° 00' W. from Grid North 5° 25' W. June 1944.	★	C. - 1° 30' W.
T. N.		Annual change about 10' E		T. N.
		G. N.		G. N.



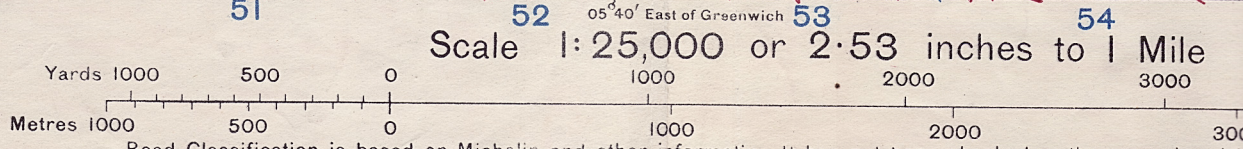
58 05° 45' E. 59
 Revised and Drawn by
 The Grid on this sheet is No Projection—Lambert (modified morphic. Spheroid—Du Plest)
 Origin—55 Grades N. 6 Grad Co-ords. of Origin—600,000
 Difference in Long. Paris-Gr

Bel

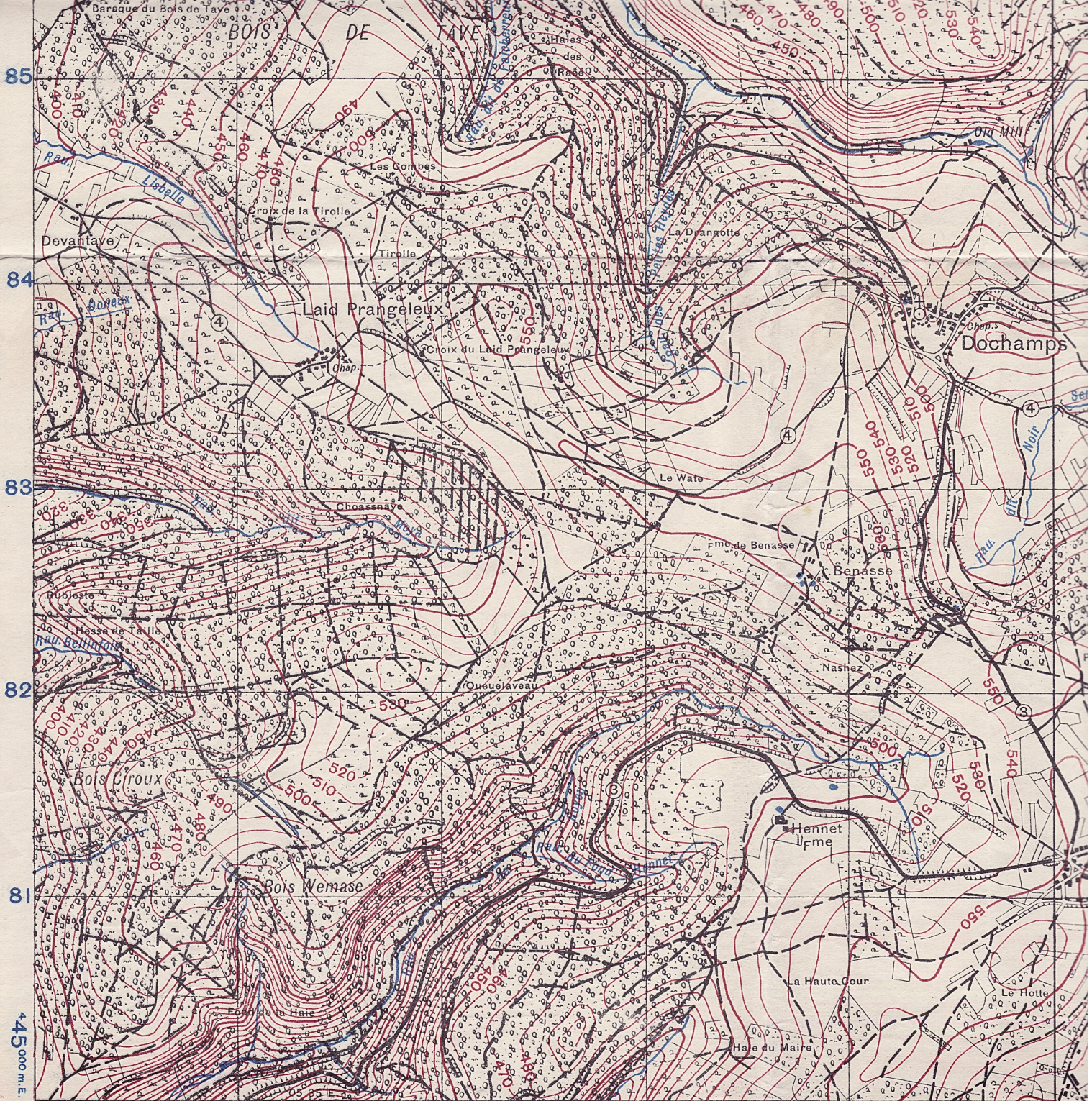


INCIDENCE OF GRID LETTERS AND INDEX TO ADJOINING SHEETS

N.W.	N.E.	North
92	S.E.	93
S.W.	S.E.	South
N.W.	N.E.	North
106		107



Road Classification is based on Michelin and other information. It has not been checked on the ground and is approximate. Contours are at 10 metres V.I. Intermediate form lines at 5 m. V.I. occasionally shown.



380 000 m.N. 46 G.S., G.S. 4041. 47 Edition of May 1944 48 49 INCIDENCE OF GRID LETTERS AND INDEX TO ADJOINING SHEETS 450

N.W.	N.E.	Nrth
92	S.E.	93
S.W.	South	
N.W.	N.E.	North
106		107

Roads 8 metres wide, metalled or paved... ① ② ③
 Secondary Roads, Other Roads & Tracks... ④
 Hedges, Walls, Fences, Footpaths
 Railway, Double Line with Station & Halt...
 Single Line with Bridge & Tunnel...
 Tramway or Narrow Gauge Line... along Road.
 Power Cable... Pylons surveyed Pylons unsurveyed
 Canal with Aqueduct & Locks

Mud, Sand, Shingle, Dunes...
 Woods, Orchards, Brushwood...
 Vineyard, Cemetery, Well...
 Calvary, Church with Trig., Church...
 Windmill, Windpump, Lighthouse, Light...
 Tower, Chimney, Monument, Trig. Point...
 Line of Trees, Trees along Road...
 Embankment, Cutting...
 Spot Height, Contours 44 50 40 35

Legend symbols for Mud, Sand, Shingle, Dunes; Woods, Orchards, Brushwood; Vineyard, Cemetery, Well; Calvary, Church with Trig., Church; Windmill, Windpump, Lighthouse, Light; Tower, Chimney, Monument, Trig. Point; Line of Trees, Trees along Road; Embankment, Cutting; Spot Height, Contours.

6/12/44/519 R.E./2188

45 000 m. E.

